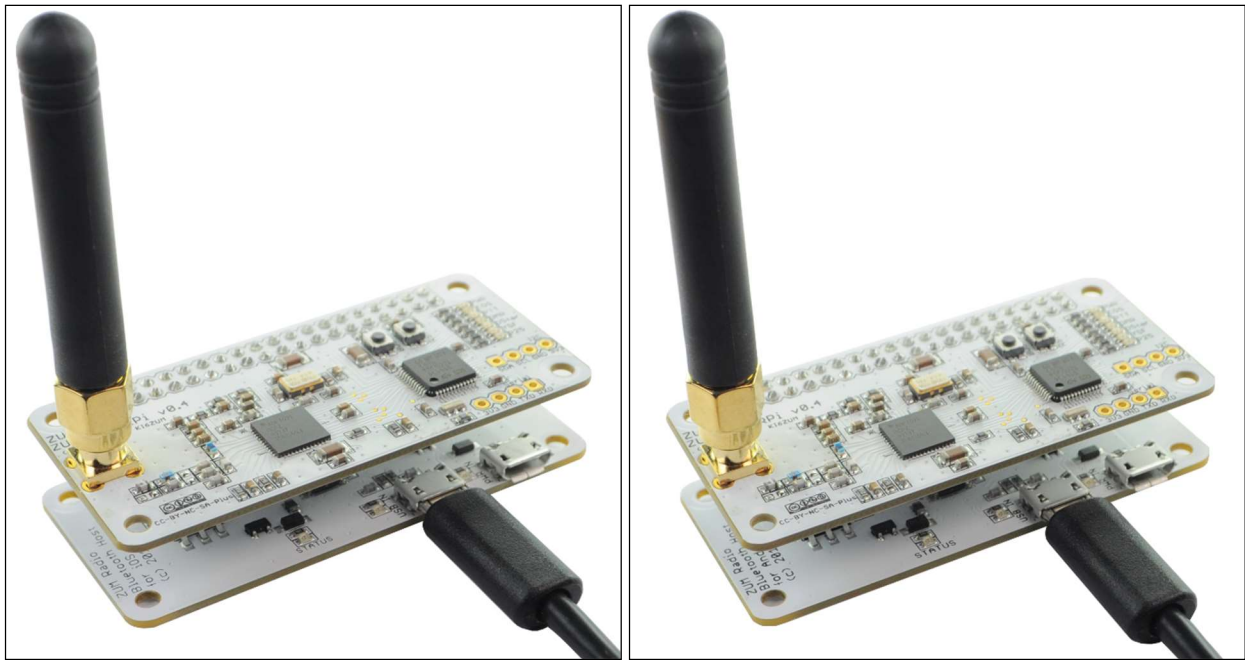


ZUM Radio Bluetooth board for Windows

Powering the board

When connecting the board to a Windows machine, the Bluetooth board should be connected to the computer with the micro USB connector on the left. (see images below) Note that the micro USB connector on the right is used to power the board to run in Bluetooth mode.



Windows Software

For more information about BlueDV, visit the website of David PA7LIM.

<https://www.pa7lim.nl/bluedv-ios/>

Install the BlueDV software for Windows:

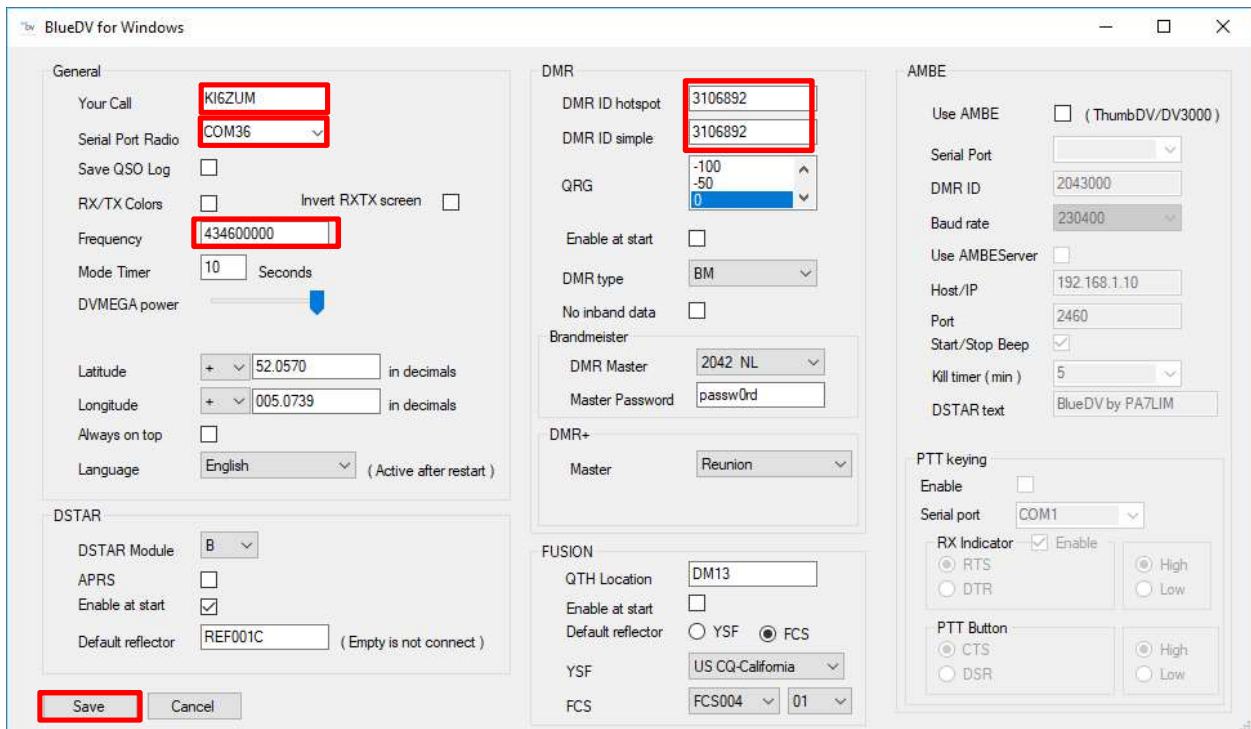
<http://software.pa7lim.nl/BlueDV/BETA/Windows/>

Launch the software and turn off "SERIAL" if it is already enabled.

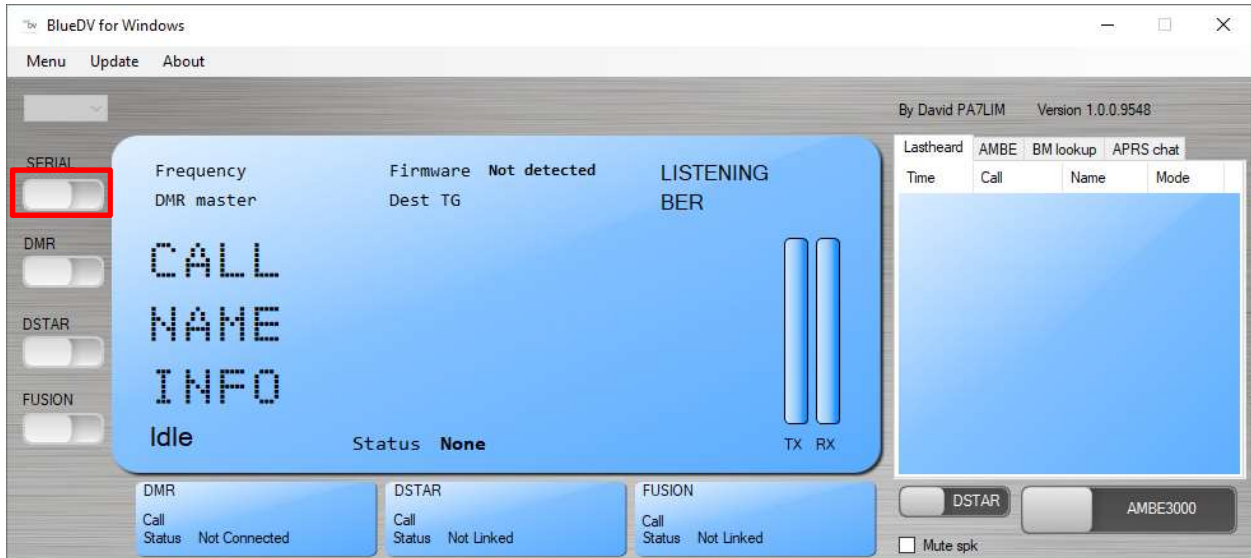


Next select "Menu" -> "Setup"

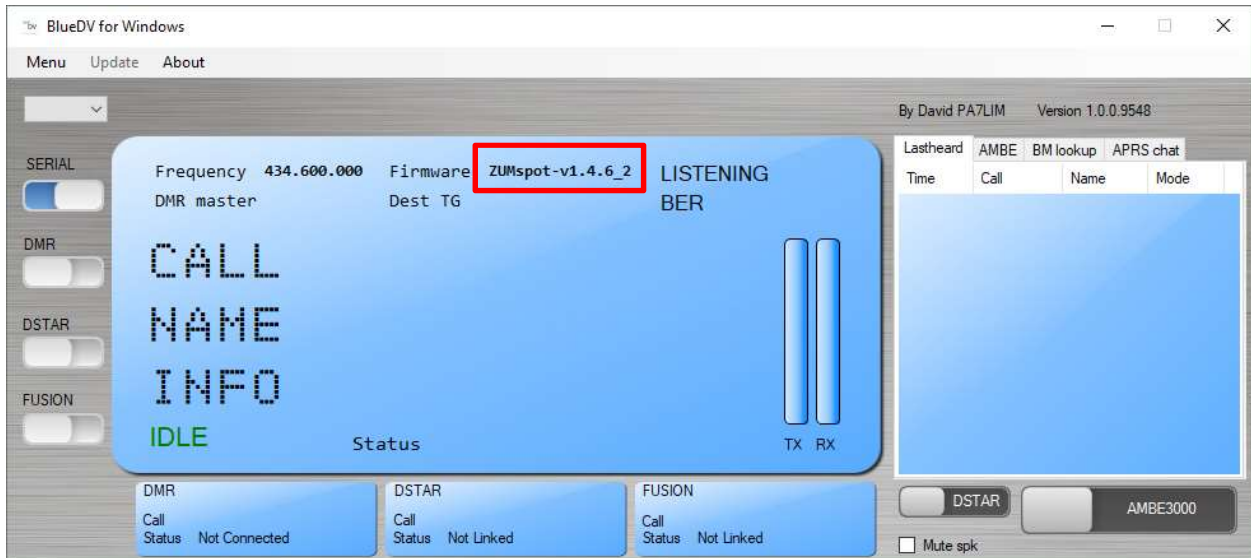
As a minimum, set "Your Call", the "Serial Port Radio", "DMR ID" and "Frequency". Next select "Save"



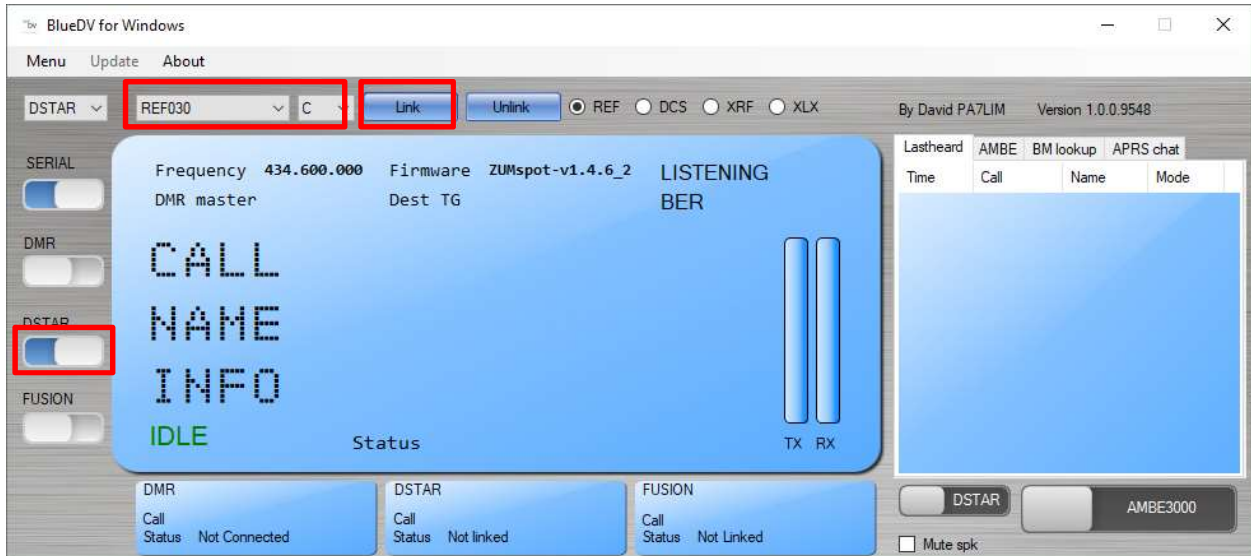
Next turn "SERIAL" back on.



If the USB connection to the ZUMspot board is functional, the software should display the "Firmware" version on the ZUMspot board.



For DSTAR, turn on the DSTAR button, select the reflector ("REF") you wish to connect to and then select "Link"



Once connected to the reflector, the software will display info when others are transmitting.

