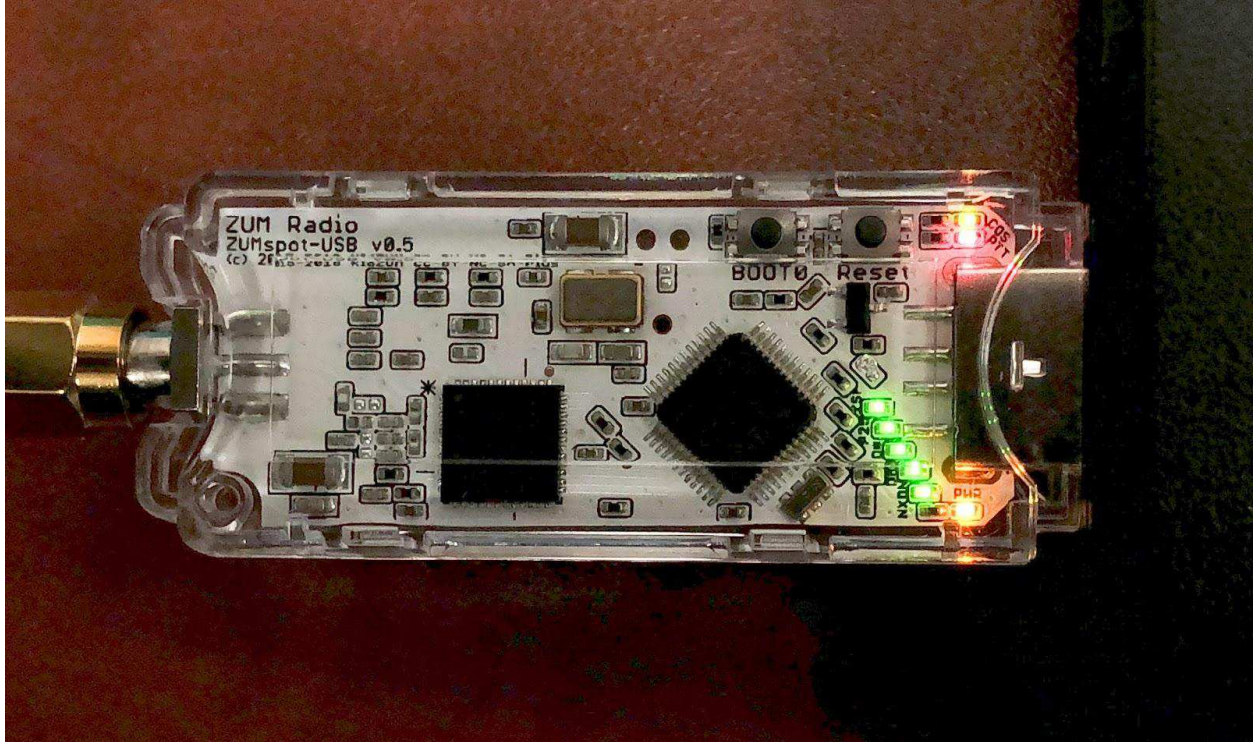


ZUMspot USB for Windows

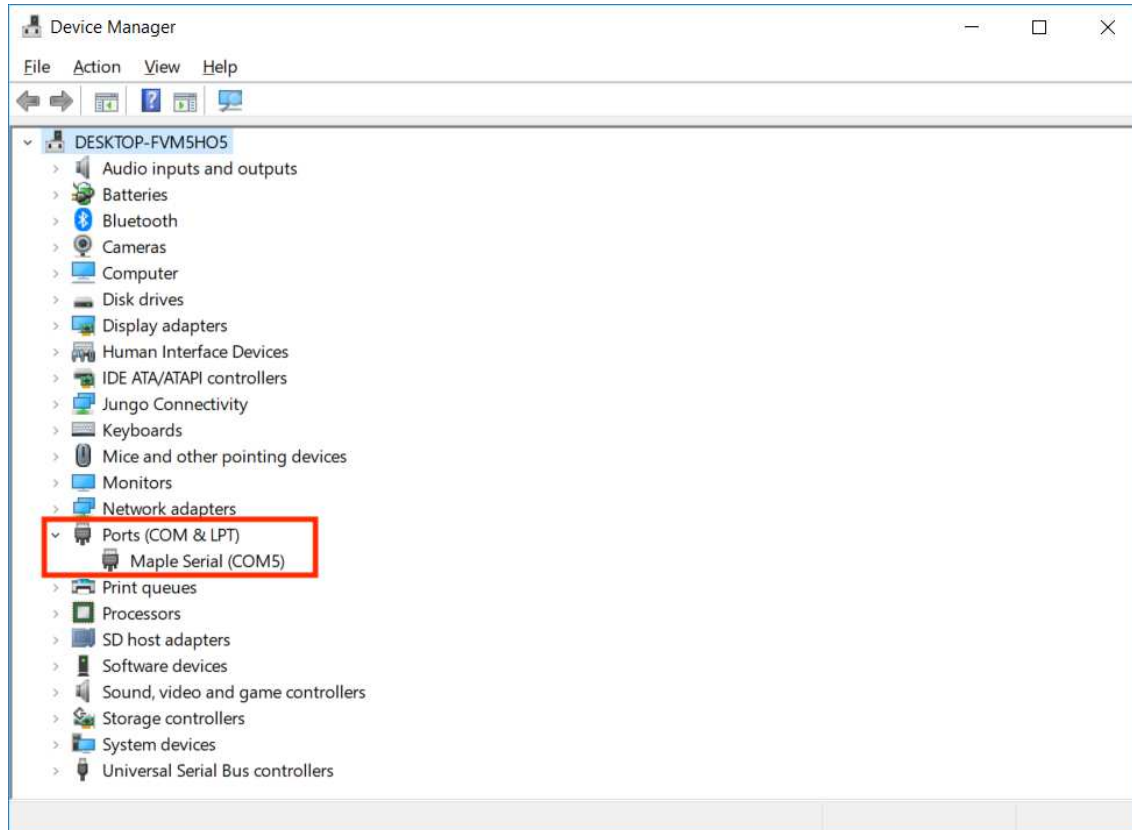
Powering the board



Insert the ZUMspot USB into any of the USB ports on your Windows machine. All of the LEDs will flash when first powered on and the PWR LED will remain on. Also, if you have the sound enabled on your computer, you should hear the USB device enumerate twice.

Device drivers

Once the device drivers for the board have loaded, there should be a new COM port displayed. Make a note of that port number.



For machines running **Windows 7** and earlier, or if there is a yellow exclamation point, you may have to manually load the drivers. Follow the driver installation instructions at the end of this document.

Windows Software

For more information about BlueDV, visit the website of David PA7LIM.

<https://www.pa7lim.nl/bluedv-windows/>

Download and install BlueDV for Windows. Be sure to download the zip file with the most recent date.

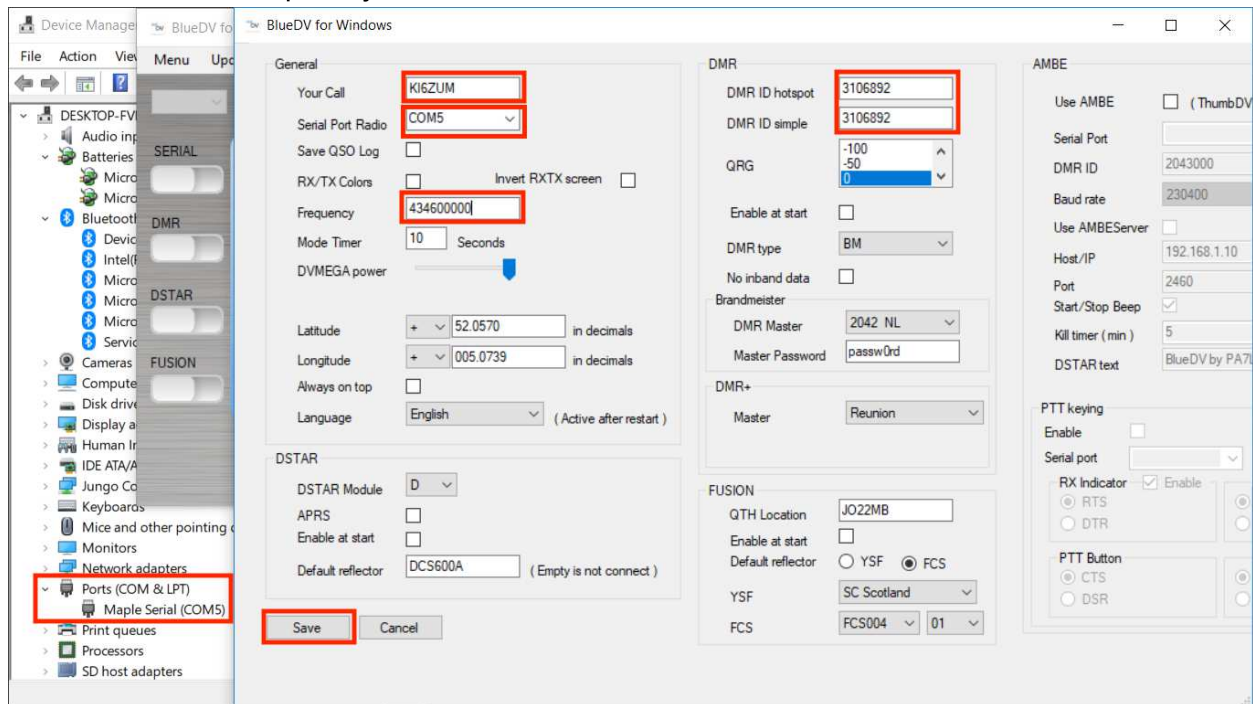
<http://software.pa7lim.nl/BlueDV/BETA/Windows/>

Configuring BlueDV

Launch the software and turn off “SERIAL” if it is already enabled.

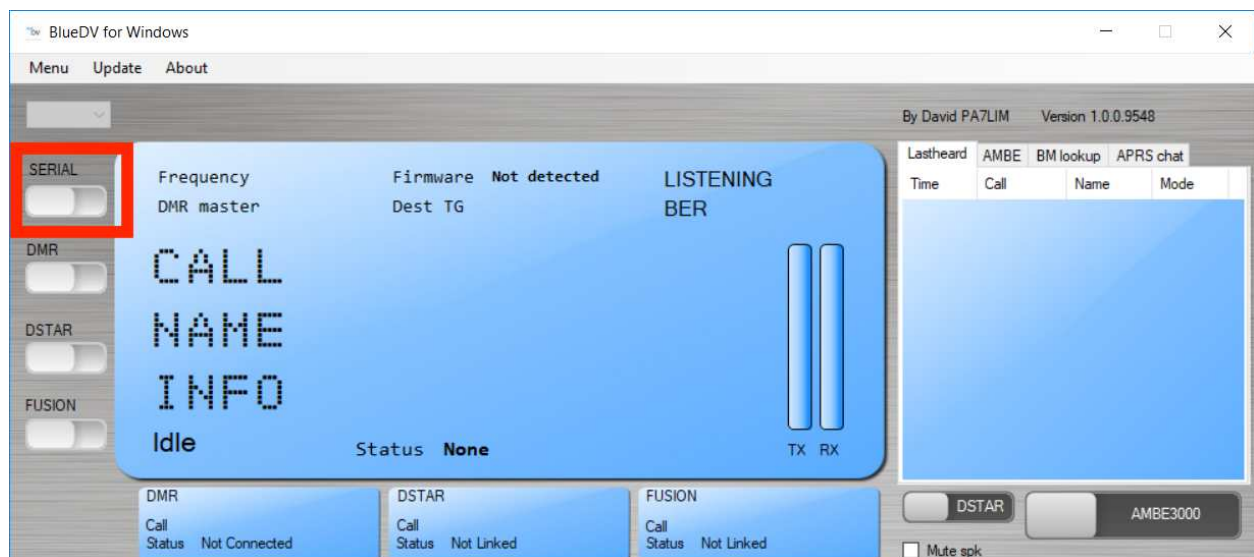


Next select “Menu” -> “Setup”. As a minimum, set “Your Call”, the “Serial Port Radio”, “DMR ID” and “Frequency”. Next select “Save”

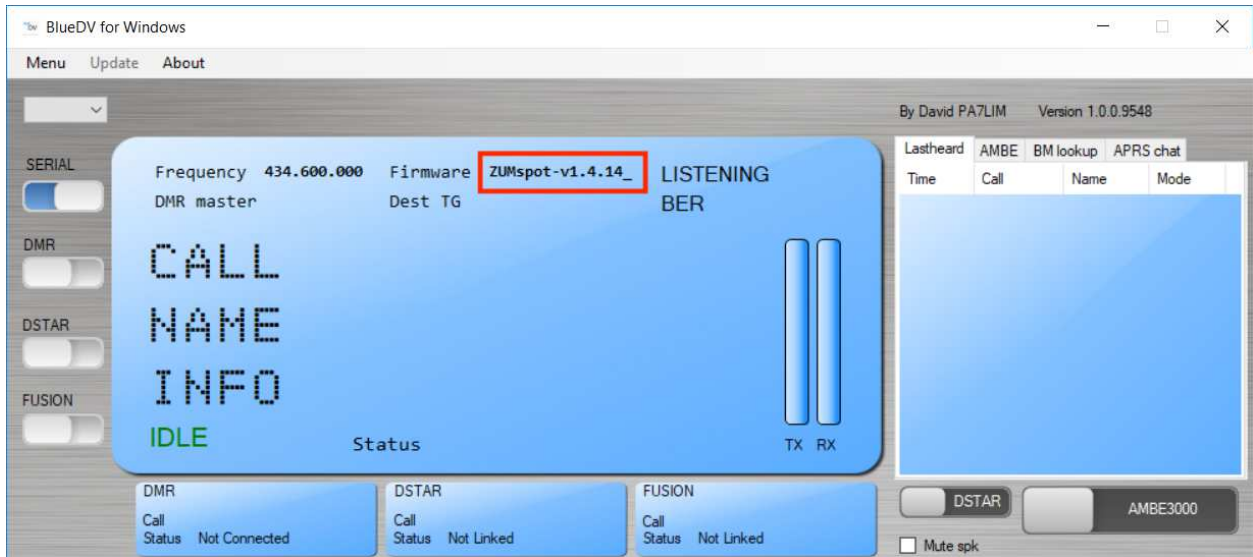


NOTE: If you reconnect the ZUMspot to another USB port, it may enumerate under a different COM port. So whenever you reconnect, double check your “Setup” with the COM port under Windows Device Manager.

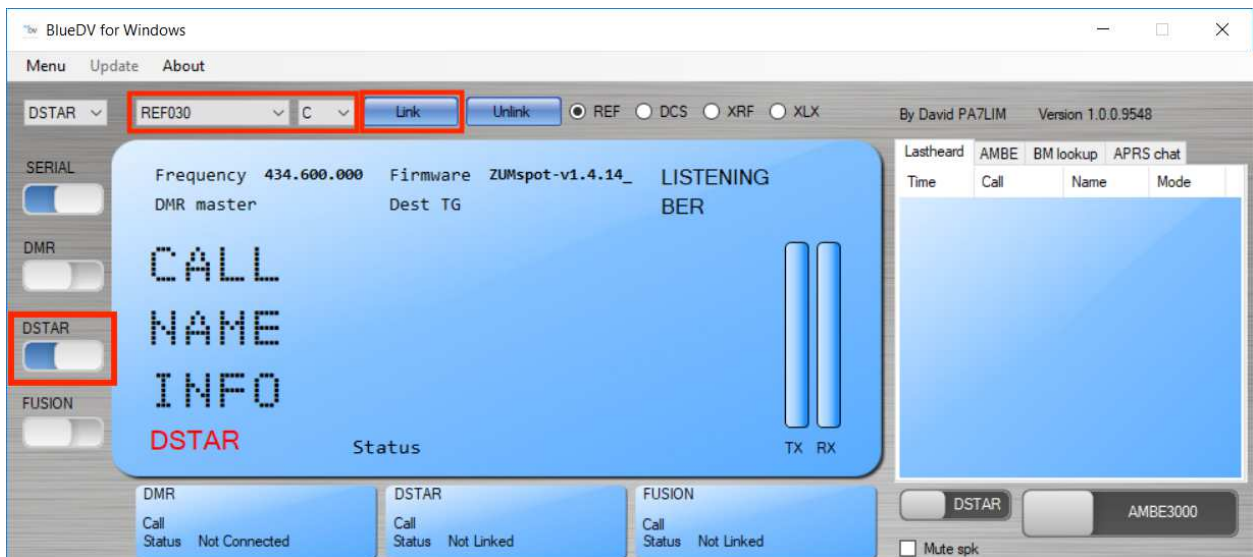
Next turn “SERIAL” back on.



If the USB connection to the ZUMspot USB is functional, the software should display the “Firmware” version of the ZUMspot.



For DSTAR, turn on the DSTAR button, select the reflector (“REF”) you wish to connect to and then select “Link”

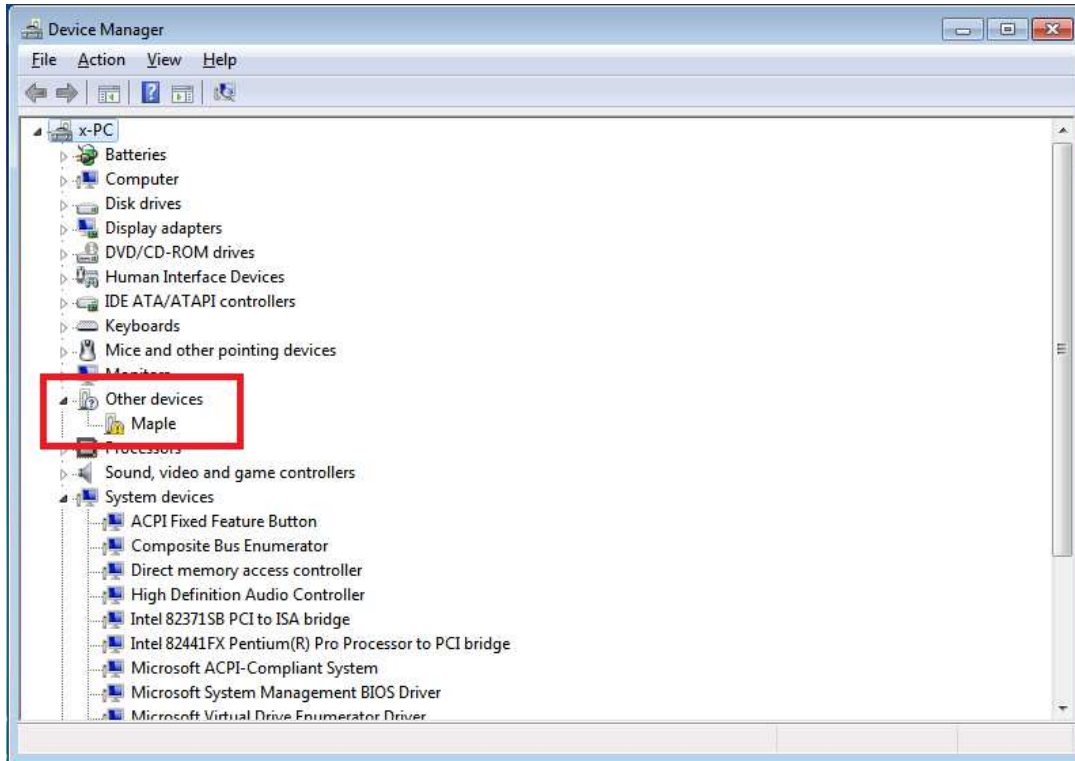


Once connected to the reflector, the software will display info when others are transmitting.



Installing device drivers

If there is a yellow exclamation point next to the “Maple” device, the device drivers need to be manually installed.

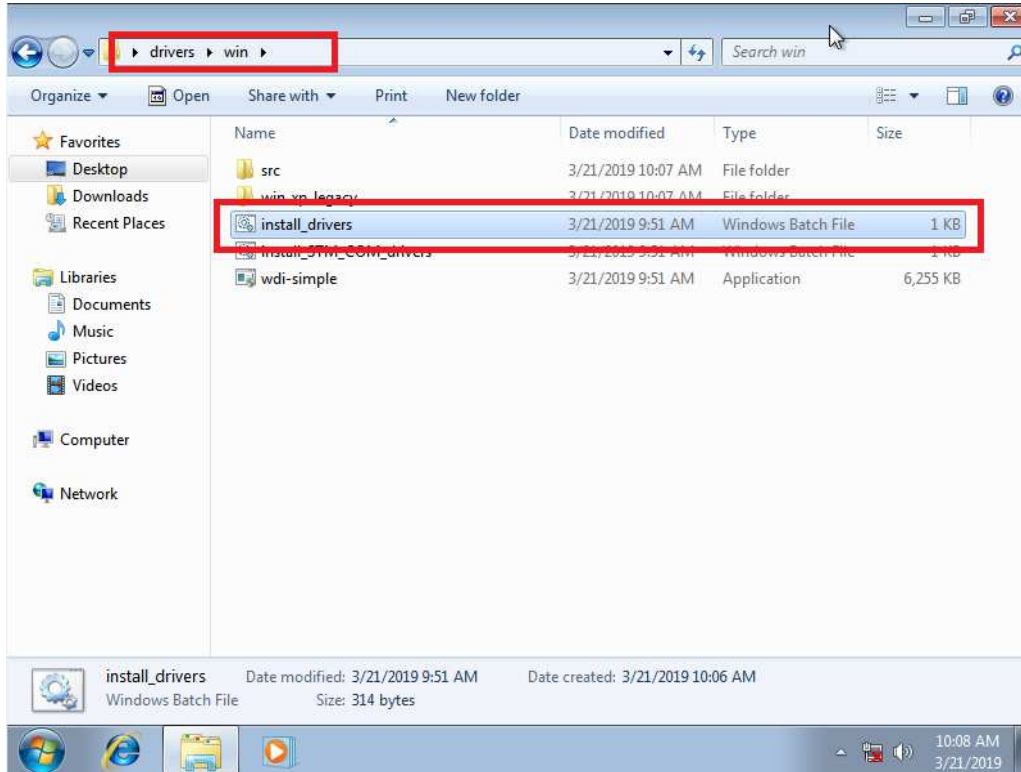


Download the drivers from GitHub:

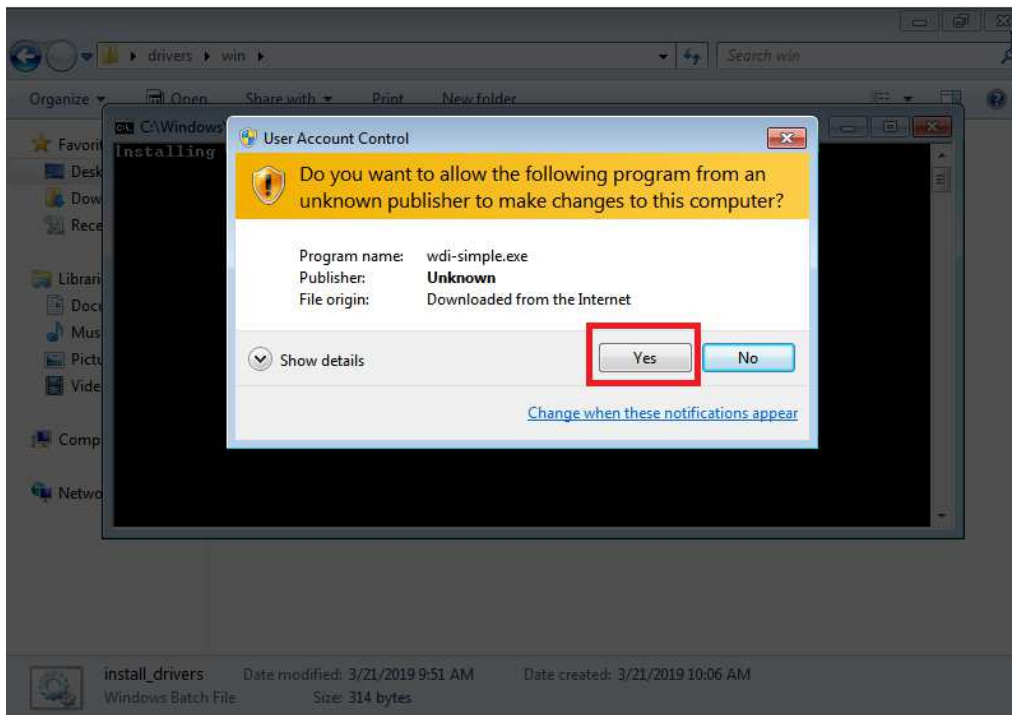
https://github.com/rogerclarkmelbourne/Arduino_STM32/archive/master.zip

Extract the files from the zip file and go to the “drivers\win” folder.

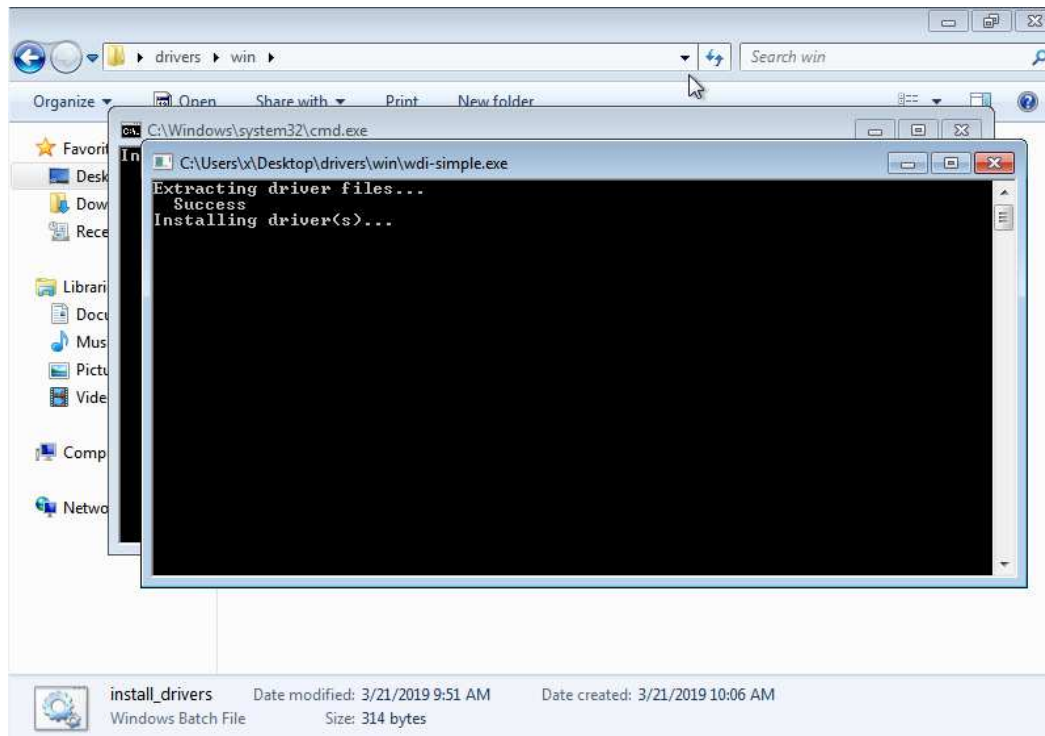
Run the “install_drivers.bat” file.



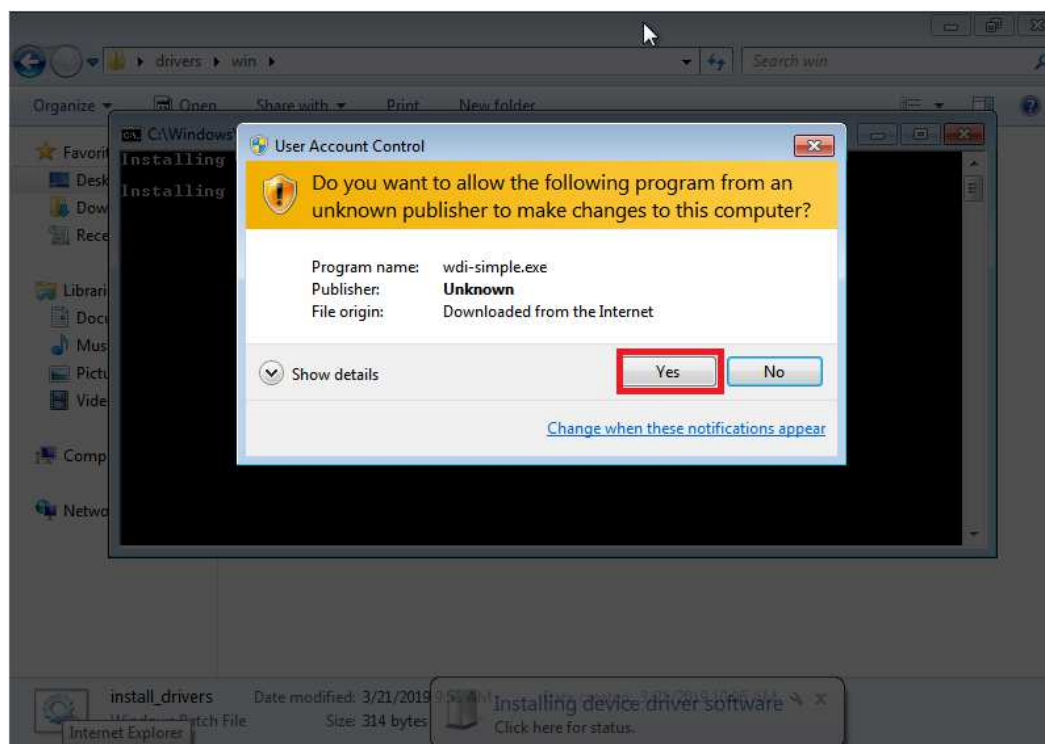
Click “Yes” to allow the driver installer to run.



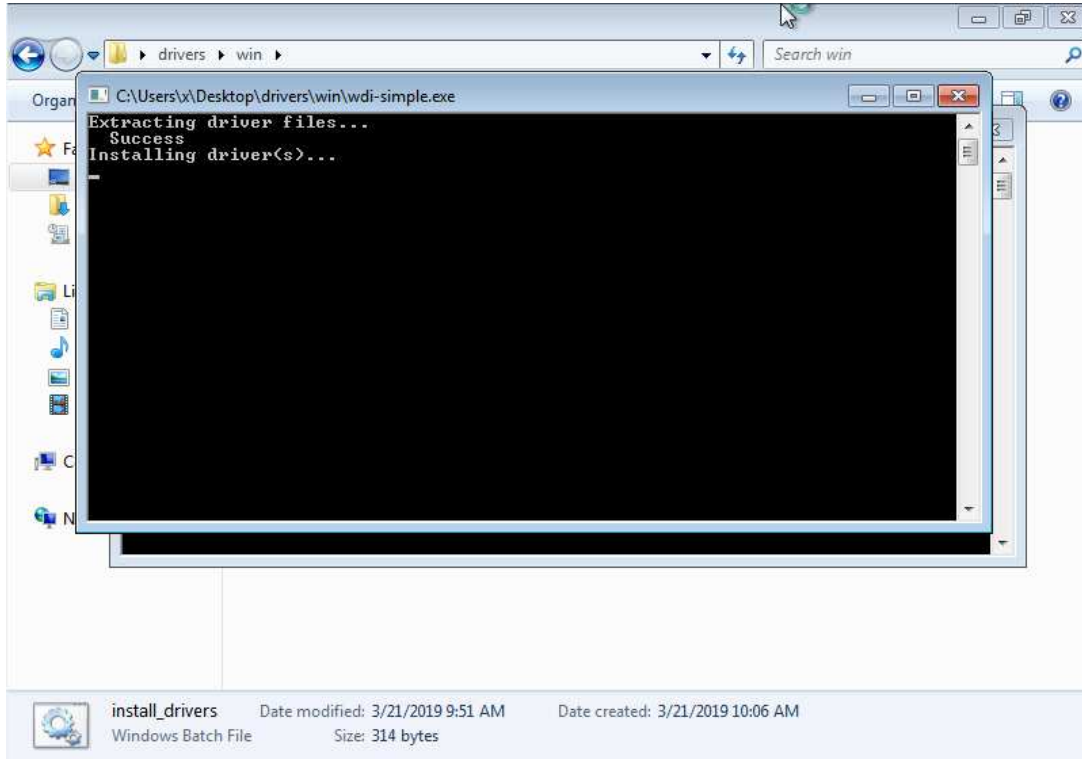
You will see the “installing driver(s)” message.



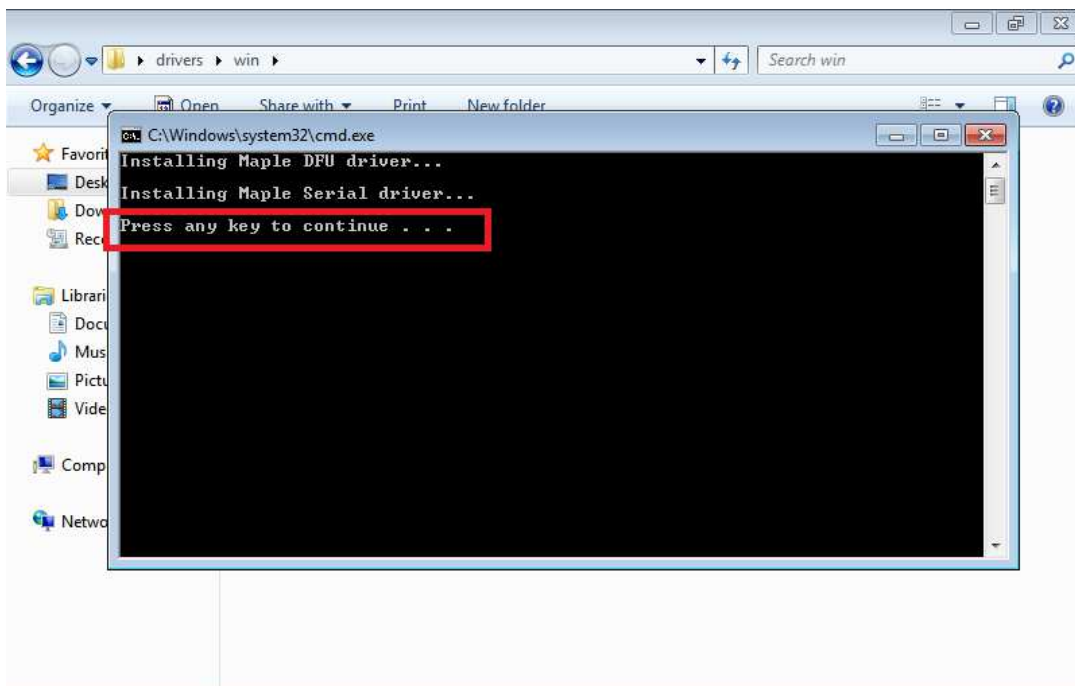
Click “Yes” to allow the second driver installer to run.



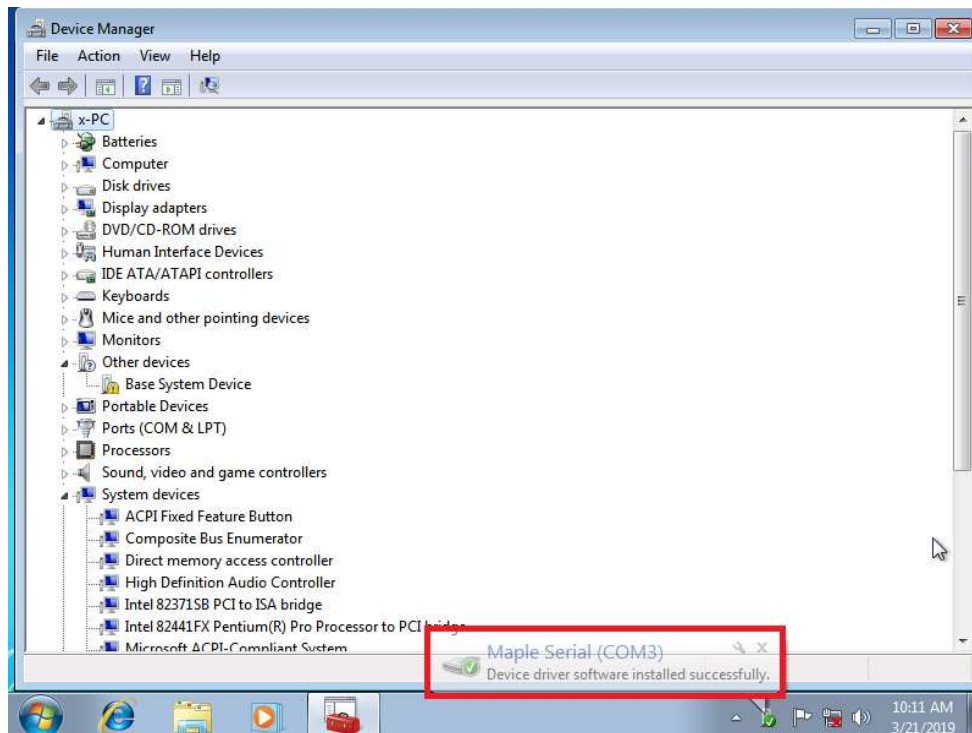
You will see the “installing driver(s)” message.



When the installation is done, “Press any key to continue”.



The drivers will now load for the ZUMspot USB. When done, you should see the “Device driver software installed successfully” message.



Now you should see a “Maple Serial” com port with no yellow exclamation point.

