

ZUMspot USB for Windows

Powering the board

Insert the ZUMspot USB into any of the USB ports on your Windows machine. All of the LEDs will flash when first powered on. Also, if you have the sound turned up on your computer, you should hear the USB enumerate twice.

Windows Software

For more information about BlueDV, visit the website of David PA7LIM.

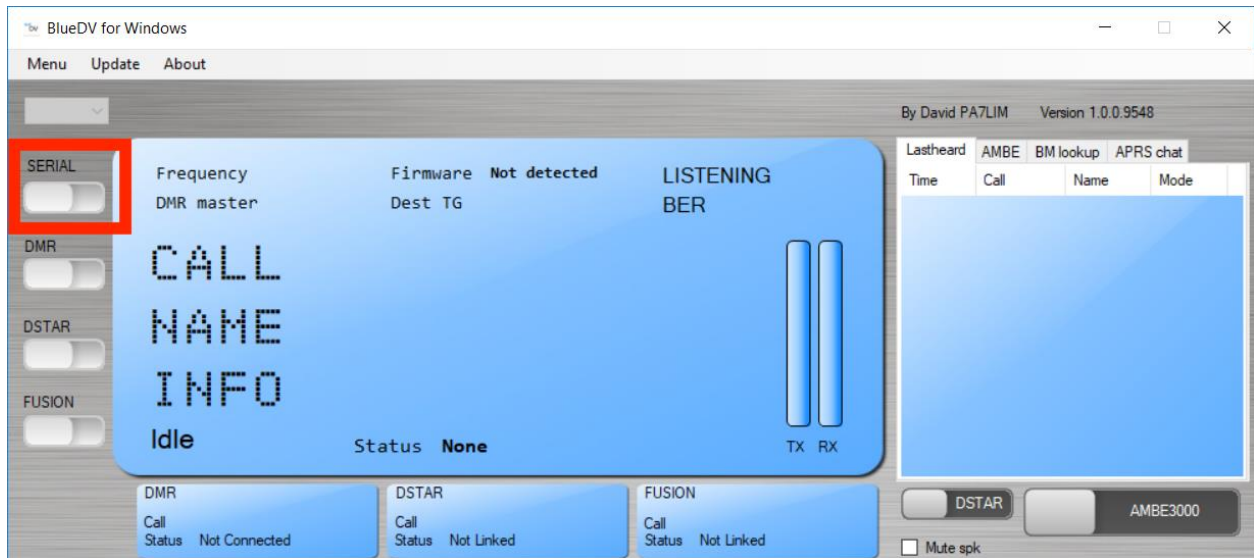
<https://www.pa7lim.nl/bluedv-windows/>

Install the BlueDV software for Windows:

<http://software.pa7lim.nl/BlueDV/BETA/Windows/>

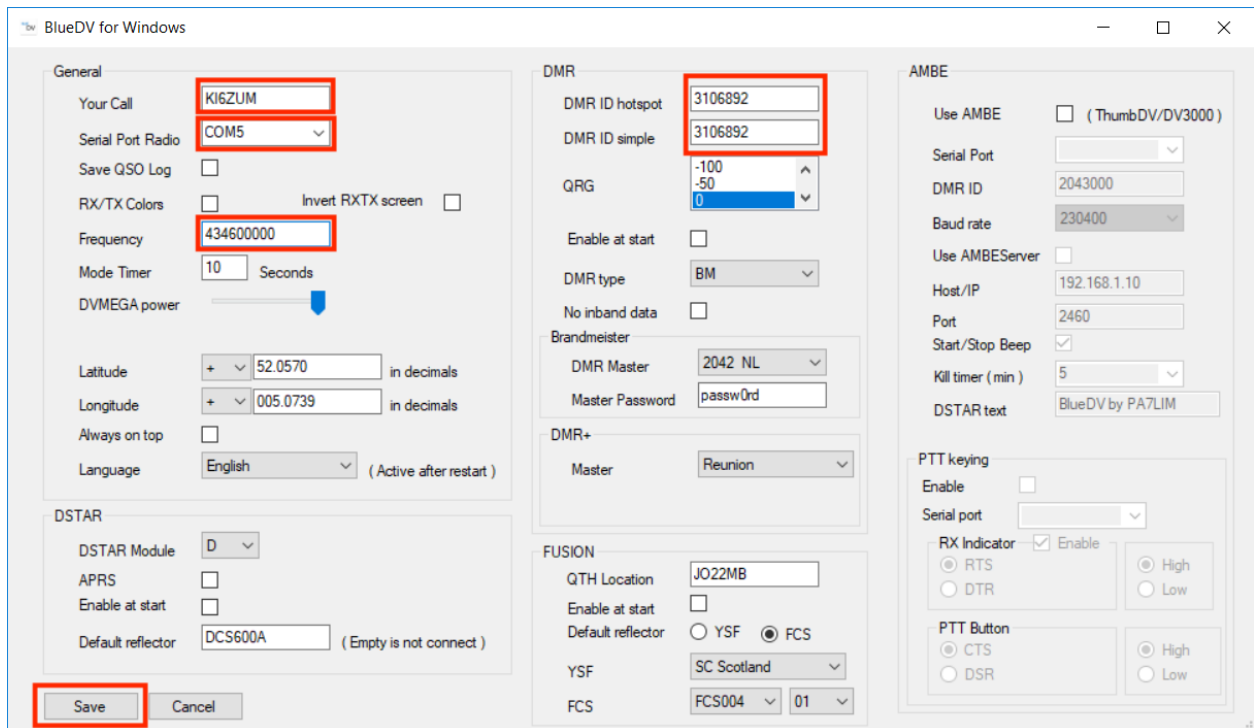
Download the zip file with the most recent date. Run the installer in the zip file.

Launch the software and turn off "SERIAL" if it is already enabled.

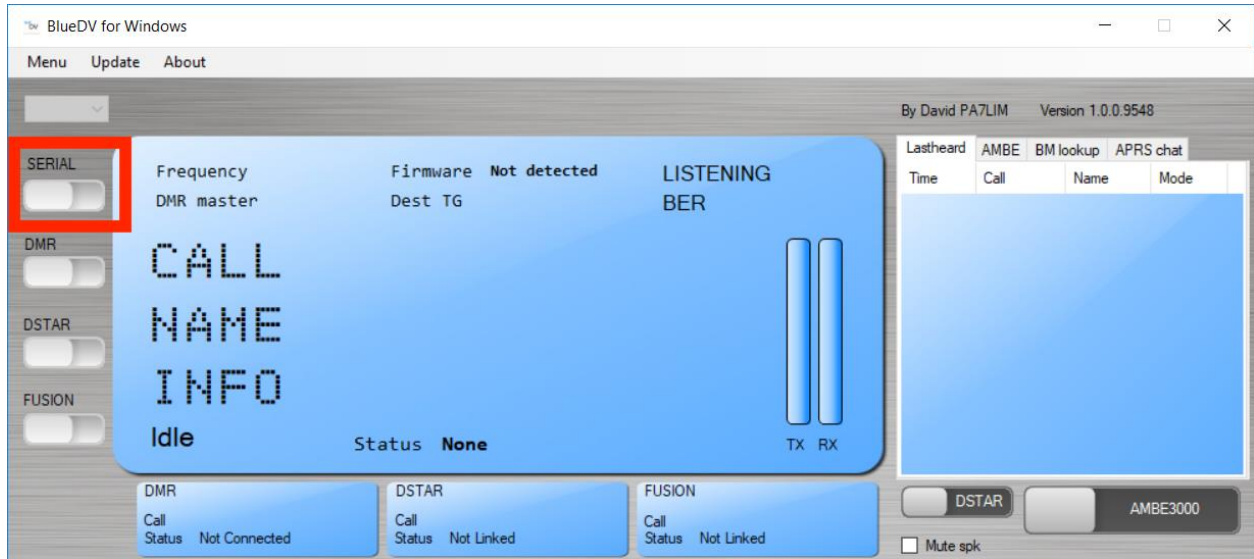


Next select "Menu" -> "Setup"

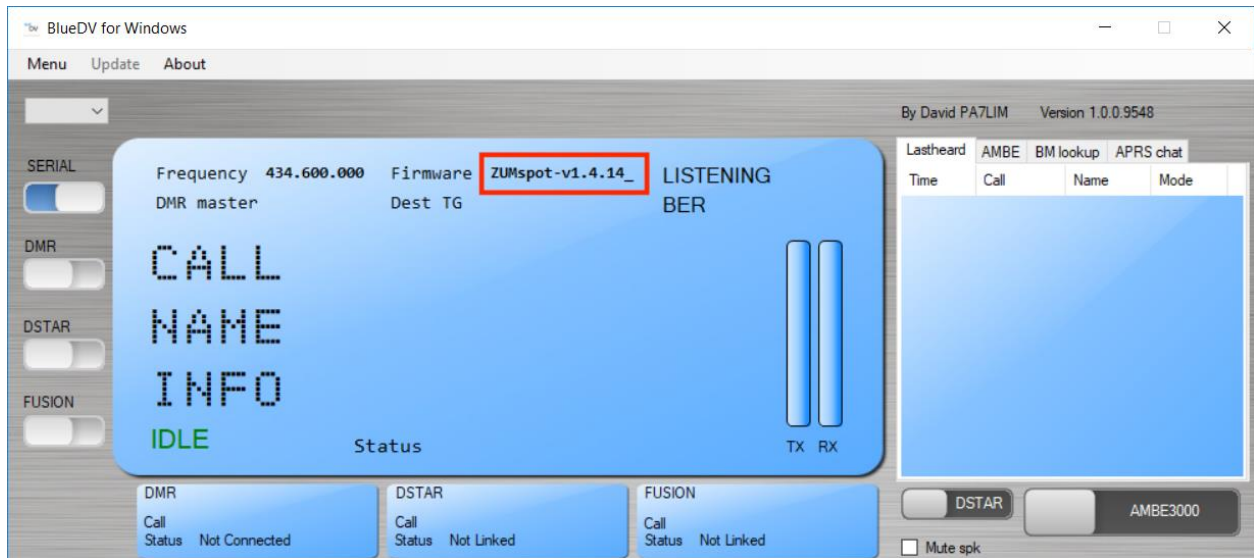
As a minimum, set "Your Call", the "Serial Port Radio", "DMR ID" and "Frequency". Next select "Save"



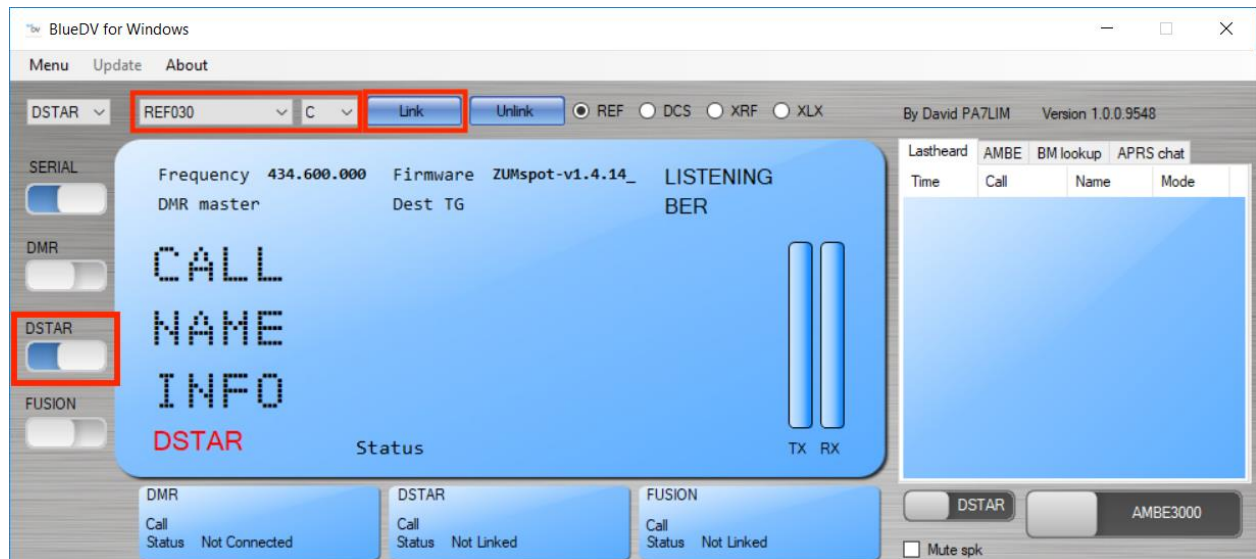
Next turn "SERIAL" back on.



If the USB connection to the ZUMspot USB is functional, the software should display the "Firmware" version on the ZUMspot.



For DSTAR, turn on the DSTAR button, select the reflector ("REF") you wish to connect to and then select "Link"



Once connected to the reflector, the software will display info when others are transmitting.

